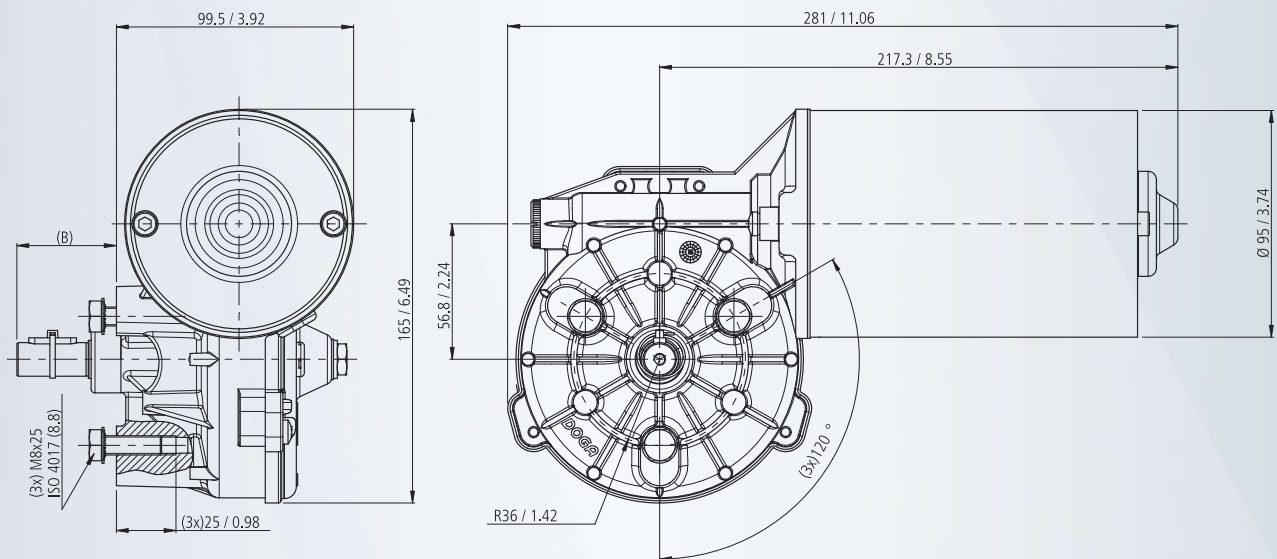


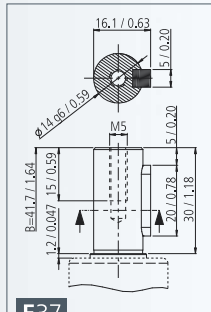
MOTOR FEATURES

REFERENCE NUMBER REFERENCIA REFERENZNUMMERN	NOMINAL VOLTAGE TENSION NOMINAL NENNSPANNUNG	NOMINAL TORQUE PAR NOMINAL DREHMOMENT NOMINAL	NOMINAL SPEED VELOCIDAD NOMINAL VITESSE NOMINALE GESCHWINDIGKEIT NOMINAL	NOMINAL CURRENT CORRIENTE NOMINAL COURANT NOMINAL NOMINALSSTROM	STARTING TORQUE PAR DE ARRANQUE COUPLE DE DEMARRAGE ANZUGSDREHMOMENT	STARTING CURRENT CORRIENTE DE ARRANQUE COURANT DE DEMARRAGE ANLAUFSTROM	SHAFT EJE ARBRE WELLE	CONNECTIONS CONEXIONES CONNECTIONS ANSCHLUSSART	WIRING DIAGRAM ESQUEMA ELECTRICO SCHEMA ELECTRIQUE SCHALTBLD.	TRANSMISSION RATIO RELACION DE REDUCCION RAPPORT DE REDUCTEUR UNTERSATZUNG	APPROXIMATE WEIGHT PESO APROXIMADO POIDS APPROXIMATIF GEWICHT (ca.)	WATERTIGHTNESS GRADO DE ESTANQUEIDAD ETANCHÉITÉ FEUCHTIGKEITSSCHUTZKLASSE	WHEEL MATERIAL MATERIA Rueda MATERIAL ROUES MATERIAL DES SCHNELLERADES	DESIGN: A-B DISEÑO: A-B DESSIN: A-B ABBILDUNG: A-B	CURVE CURVA COURBE KÜRVE
	Un (V)	Mn (N.m./lbf.in)	n (r.p.m.)	In (A)	Ma (N.m./lbf.in)	Ia (A)				i	P (kg/lb)	IP			
35937102000	12	20 / 177	22	13.8	130 / 1150	60	E37	C47	EE20	50:1	5.90 / 13	IP 66	PLA	A	20
35937103000	24	20 / 177	22	6	130 / 1150	30	E37	C47	EE20	50:1	5.90 / 13	IP 66	PLA	A	20
35992992000	12	15 / 132.7	40	18	120 / 1062	98	E37	C47	F20	50:1	5.90 / 13	IP 66	PLA	A	21
35992993000	24	15 / 132.7	40	9	120 / 1062	49	E37	C47	F20	50:1	5.90 / 13	IP 66	PLA	A	21
35990423000	24	25 / 221	25	7	135 / 1195	30	E37 / E51	C47	F20	50:1	5.90 / 13	IP 40	PLA	B	22

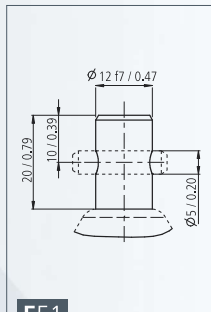


mm / inch

SHAFT **EJE** ARBRE **WELLE**

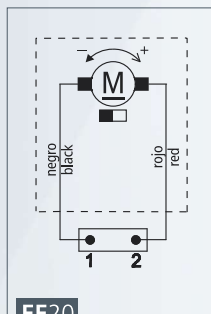


E37

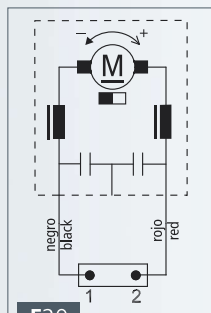


E51

WIRING DIAGRAM **ESQUEMA ELÉCTRICO** SCHEMA ÉLECTRIQUE **SCHALTBILD**



EE20



F20

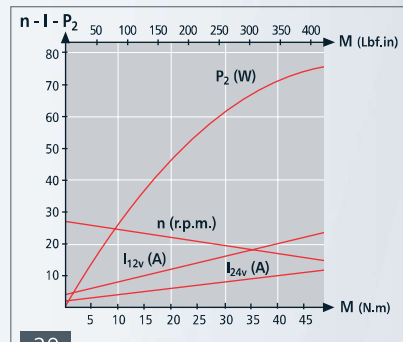
CONNECTIONS **CONEXIONES** CONNEXIONS **ANSCHLUSSART**



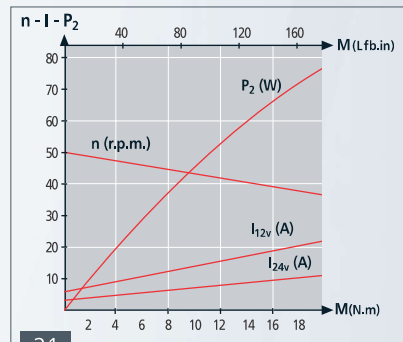
C47

mating conector (not supplied)
 TE/DEUTSCH DT06-2S

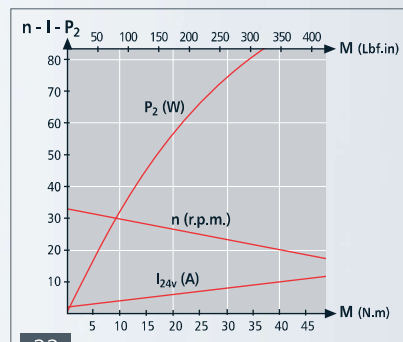
CURVES **CURVAS** COURBES **KURVEN**



20



21



22